

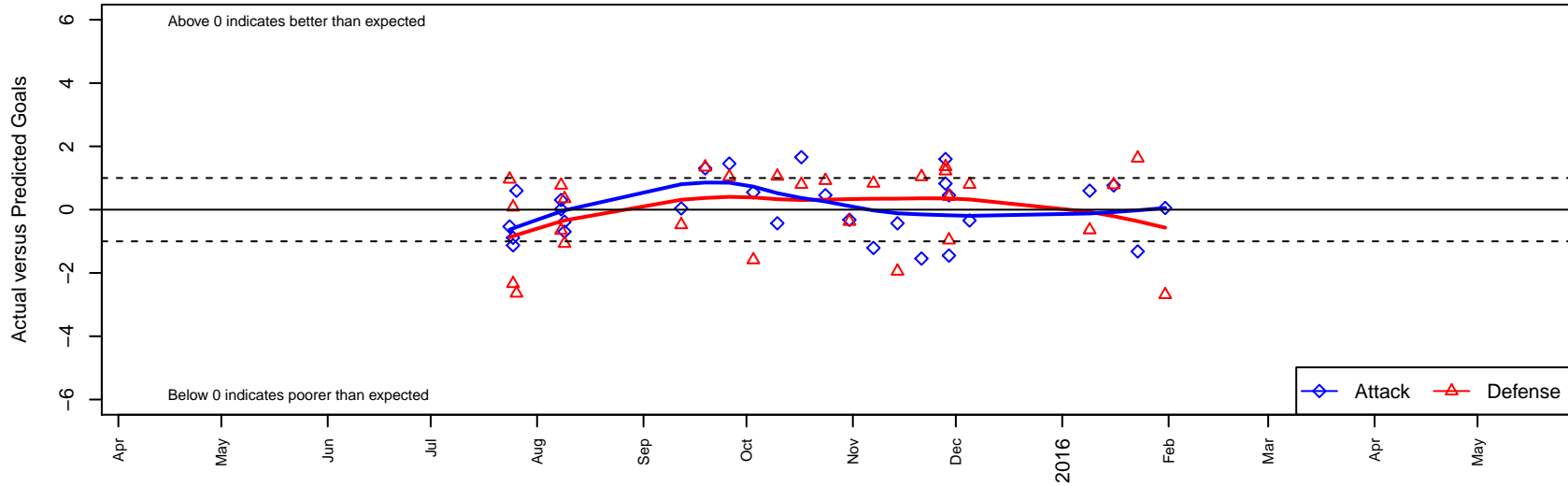
# NSC Vipers G02

North Shore SC  
Woodinville, WA  
G02 total strength=883  
attack=2.08 defense=0.85  
fall league = NPSL Div 2 U13

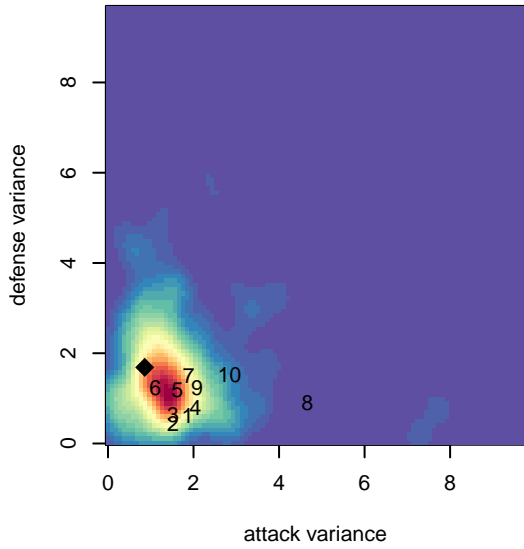
alt names used:  
NSC Vipers G02  
NSC Vipers G02  
NSC Vipers G02  
G02 Vipers

Venues played:  
2015 Crossfire Select GU13 Gold  
2015 River Jam Samba U12-13  
2015 NPSL Division 2 U13  
2015 Cranberry Cup U12-13  
2015 Founders Cup G02

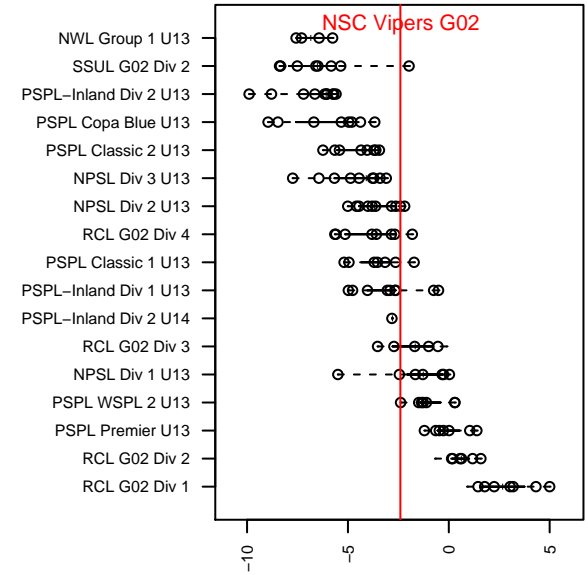
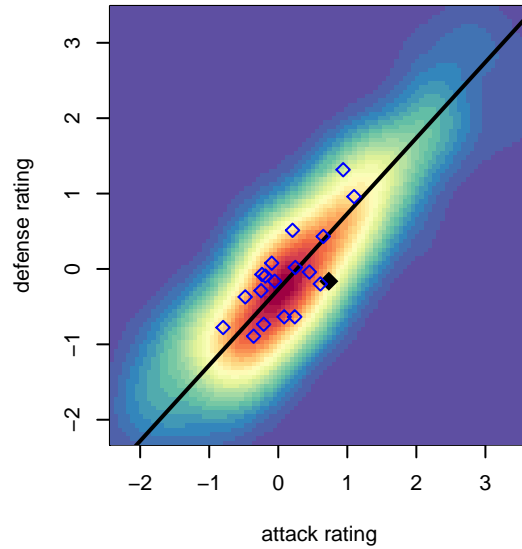
**NSC Vipers G02**  
Dots are actual minus expected GF (blue circles) and GA (red triangles).  
Blue line is smoothed change in attack strength. Red is smoothed change in defense strength.



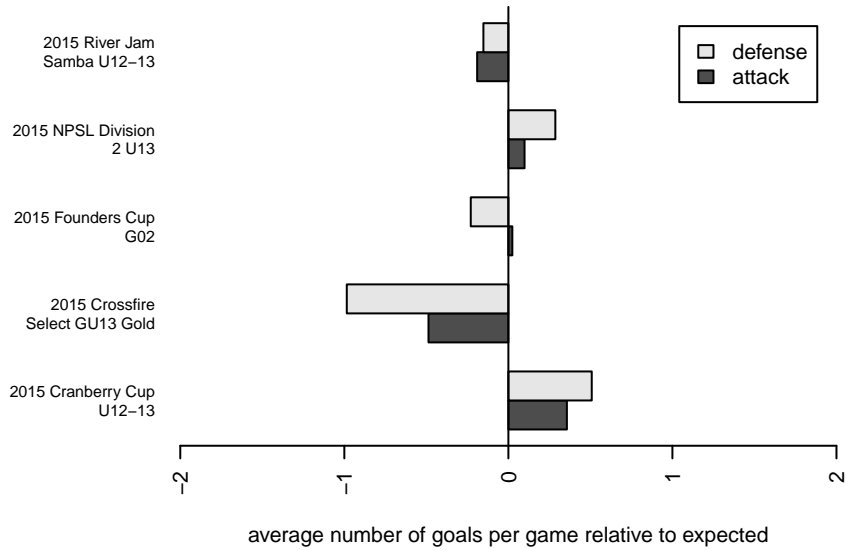
**attack and defense variance (black dot)  
relative to other teams  
and top 10 in region**



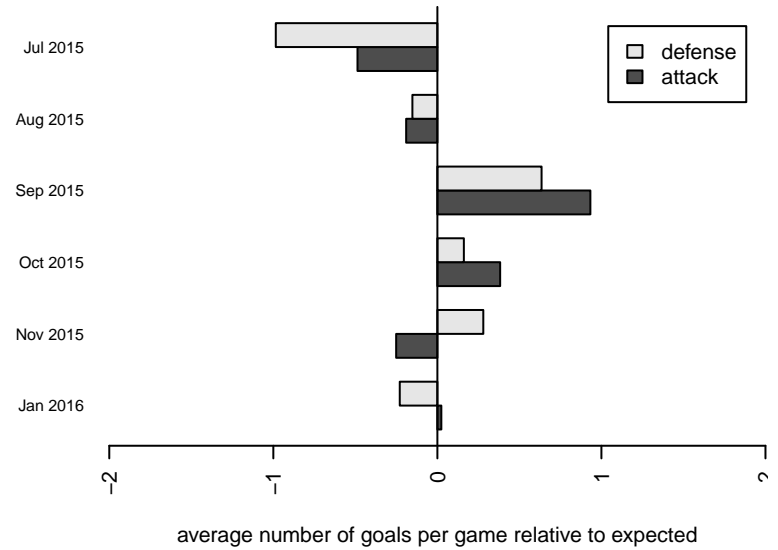
**attack and defense rating  
relative to others at age  
and all opponents in last 13 months**



**Performance relative to 13 month average**



**Performance relative to 13 month average**



date	home		away		venue	pred.home	pred.away
2016-01-31	Kent United Green G02	6	NSC Vipers G02	1	2015 Founders Cup G02	3.31	0.95
2016-01-23	NSC Vipers G02	2	Seattle United S Blue G02	0	2015 Founders Cup G02	3.32	1.63
2016-01-16	Mukilteo Rush G02	0	NSC Vipers G02	5	2015 Founders Cup G02	0.78	4.23
2016-01-09	Crossfire Select Miller G02	3	NSC Vipers G02	2	2015 Founders Cup G02	2.36	1.40
2015-12-05	NSC Vipers G02	5	Newport FC Fusion G02	0	2015 NPSL Division 2 U13	5.34	0.80
2015-11-29	NSC Vipers G02	3	PSA Force G02	2	2015 Cranberry Cup U12-13	2.55	1.04
2015-11-29	NSC Vipers G02	0	NSC Thunder G02	1	2015 Cranberry Cup U12-13	1.45	1.41
2015-11-28	NSC Vipers G02	3	Crossfire Select Miller G02	1	2015 Cranberry Cup U12-13	1.40	2.36
2015-11-28	FC Edmonds Revolution G03	0	NSC Vipers G02	3	2015 Cranberry Cup U12-13	1.22	2.18
2015-11-21	PSA Force G02	0	NSC Vipers G02	1	2015 NPSL Division 2 U13	1.04	2.55
2015-11-14	NSC Vipers G02	2	MIFC Fusion G02	4	2015 NPSL Division 2 U13	2.43	2.05
2015-11-07	Crossfire Select McCool G02	0	NSC Vipers G02	2	2015 NPSL Division 2 U13	0.83	3.21
2015-10-31	Seattle United S Blue G02	2	NSC Vipers G02	3	2015 NPSL Division 2 U13	1.63	3.32
2015-10-24	NSC Vipers G02	5	Whatcom FC Rangers White G02	0	2015 NPSL Division 2 U13	4.54	0.92
2015-10-17	NSC Vipers G02	7	Newport FC Fusion G02	0	2015 NPSL Division 2 U13	5.34	0.80
2015-10-10	MIFC Fusion G02	1	NSC Vipers G02	2	2015 NPSL Division 2 U13	2.05	2.43
2015-10-03	NSC Vipers G02	2	NSC Thunder G02	3	2015 NPSL Division 2 U13	1.45	1.41
2015-09-26	NSC Vipers G02	4	PSA Force G02	0	2015 NPSL Division 2 U13	2.55	1.04
2015-09-19	Kent United White G02	0	NSC Vipers G02	5	2015 NPSL Division 2 U13	1.34	3.70
2015-09-12	Lake Hills Supreme G02	2	NSC Vipers G02	2	2015 NPSL Division 2 U13	1.52	1.96
2015-08-09	SGESC Fusion Red G02	2	NSC Vipers G02	2	2015 River Jam Samba U12-13	0.93	2.38
2015-08-09	NSC Vipers G02	3	Kent United White G02	1	2015 River Jam Samba U12-13	3.70	1.34
2015-08-08	NSC Vipers G02	3	SGESC Fusion G03	0	2015 River Jam Samba U12-13	2.99	0.77
2015-08-08	NSC Vipers G02	4	Kent United White G02	2	2015 River Jam Samba U12-13	3.70	1.34
2015-07-26	Crossfire Select Miller G02	5	NSC Vipers G02	2	2015 Crossfire Select GU13 Gold	2.36	1.40
2015-07-25	NSC Vipers G02	1	FPSC Fury Black G02	2	2015 Crossfire Select GU13 Gold	1.89	2.08
2015-07-25	Seattle Celtic Green G02	4	NSC Vipers G02	1	2015 Crossfire Select GU13 Gold	1.66	2.13
2015-07-24	NSC Vipers G02	0	BYSC Select Blue Angels G02	2	2015 Crossfire Select GU13 Gold	0.53	2.96